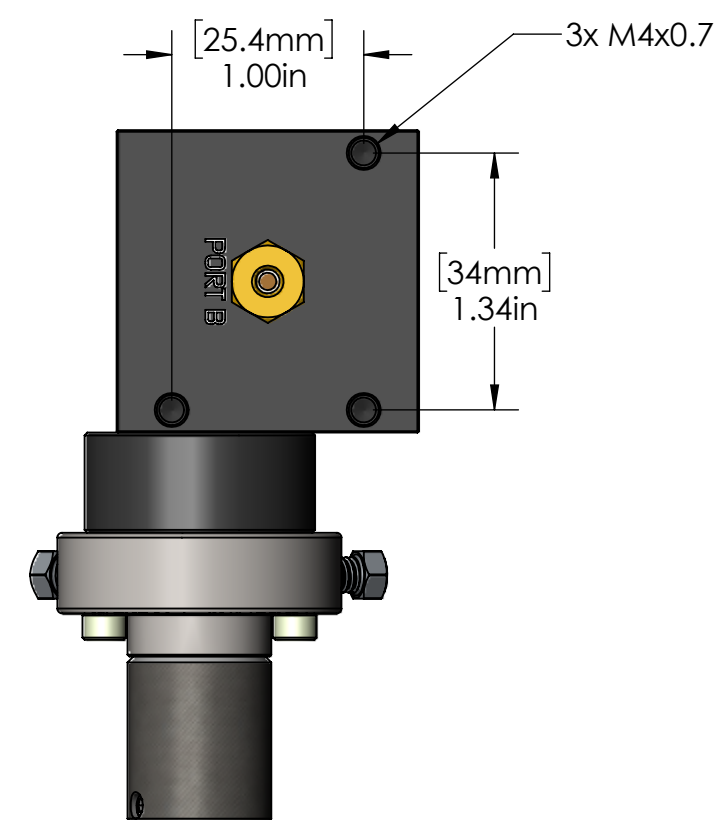
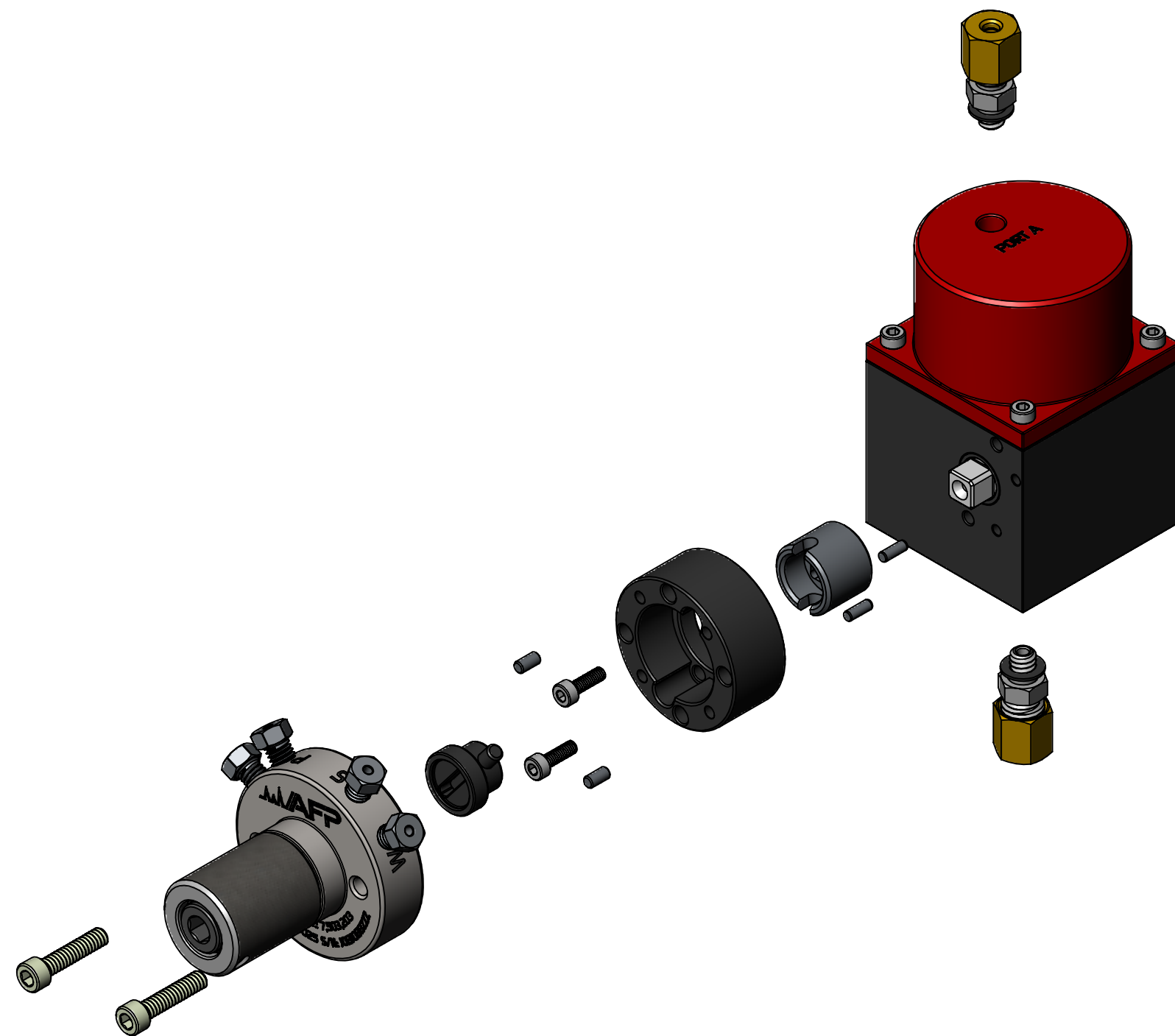
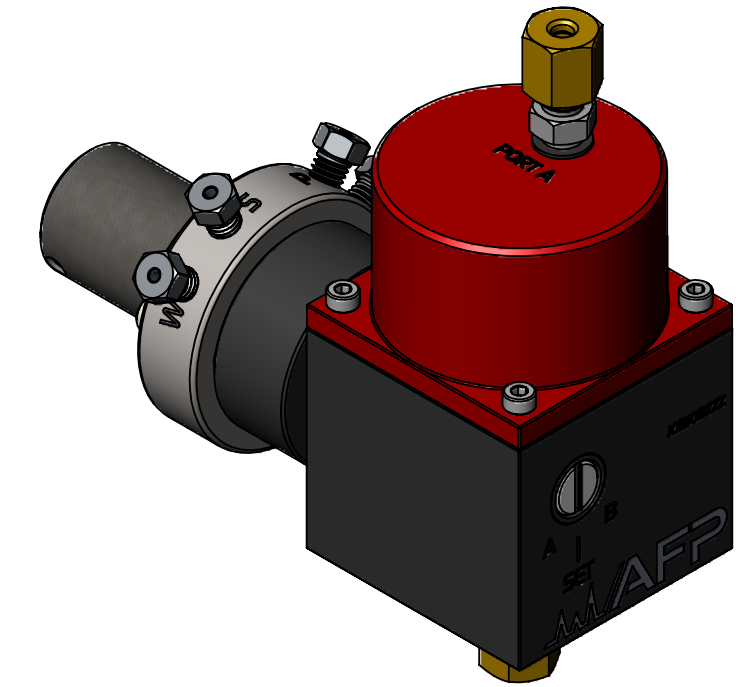
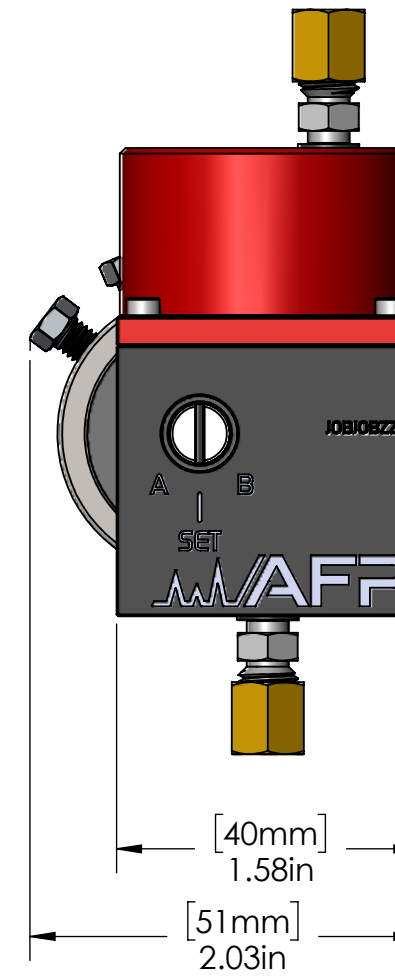
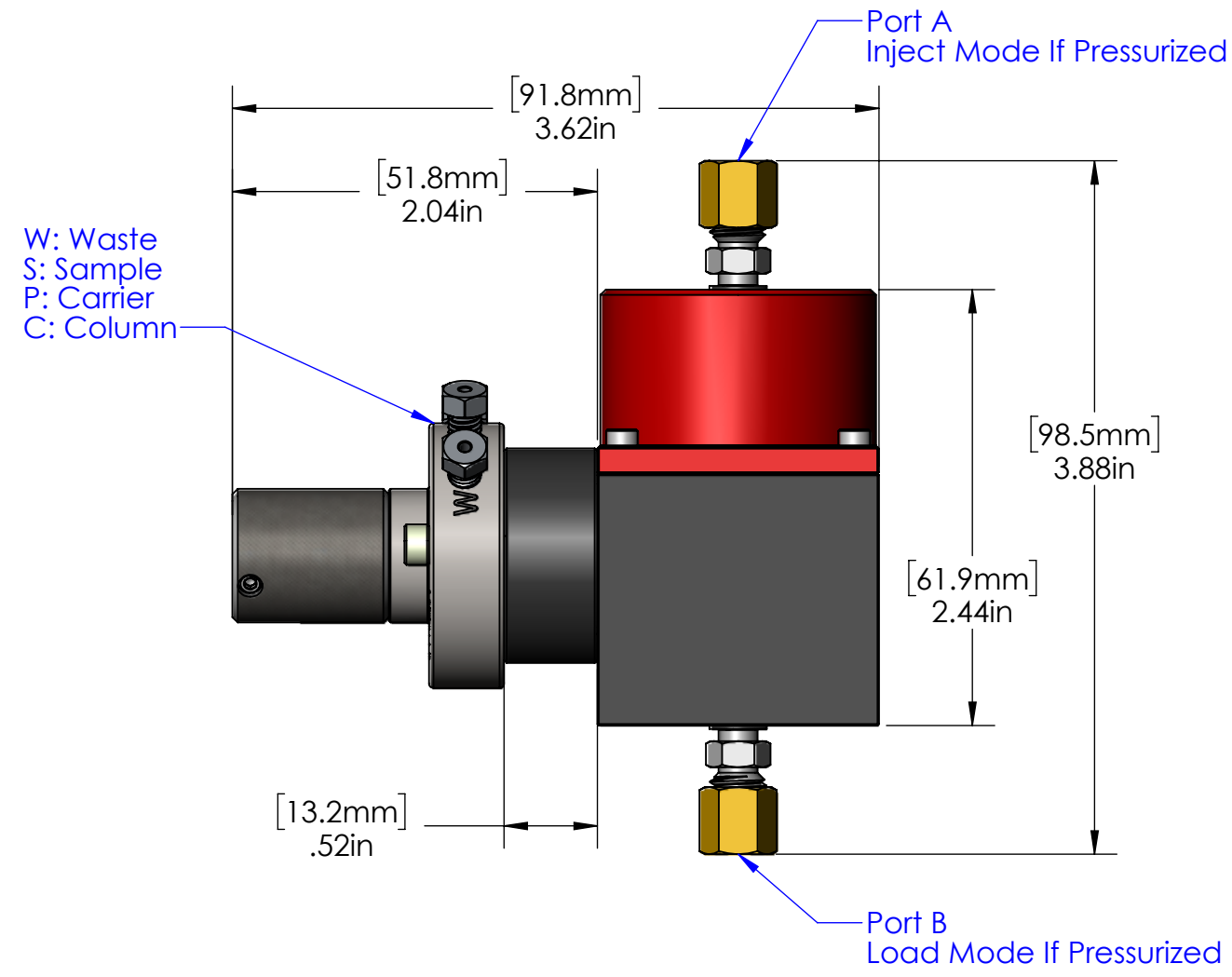


Date	Ver-Rev.	Description - ECR	Design by
2025-07-22	01	INITIAL RELEASE	Etienne Boisclair



SPECIFICATIONS:

PRODUCT P/N	MRV04-16R2-0025-CP
VALVE P/N	MRV04-16R2-0025
VALVE TYPE	HIGH PERFORMANCE GRADE, MEDIUM TEMPERATURE
NUMBER OF PORTS	4
PORT SIZE	0.025" [0.64 mm]
PORT CONNECTION	1/16" [1.6 mm]
INTERNAL SAMPLING LOOP SIZE	1µL
MAX. WORKING PRESSURE	1000 psig [6895 kPa]
MAX. INITIAL LEAK RATE	1.6E-10 Atm-cc/s He
MAX. INITIAL PRESSURE DROP	2 kPa @ 75 sccm N ₂ , 1 kPa between any section
STAND-OFF LENGTH	CLOSE MOUNT
ACTUATOR PRESSURE INLET	40 psig [275 kPa] min., 80 psig [550 kPa] max.
VALVE MAX. WORKING TEMPERATURE	437°F [225°C]
ACTUATOR MAX. WORKING TEMP.	257°F [125°C]
MATERIAL	NITRONIC 60 VALVE STATOR R2 ROTOR TYPE (MODIFIED PEEK)

MAFP		Part	MRV04-16R2-0025-CP	Material		Finish	
2659, boul. du Parc Technologique Québec, Québec, CANADA, G1P 4S5 418-338-0004		Description	Closemount MPA 1µL 1000psi				
Rev.	Status	Design by	Approved by				
01	Released	Etienne Boisclair	à valider avec Josef				
Unit	Format	Scale	Sheet				
INCH	C	1:1	1 of 2				