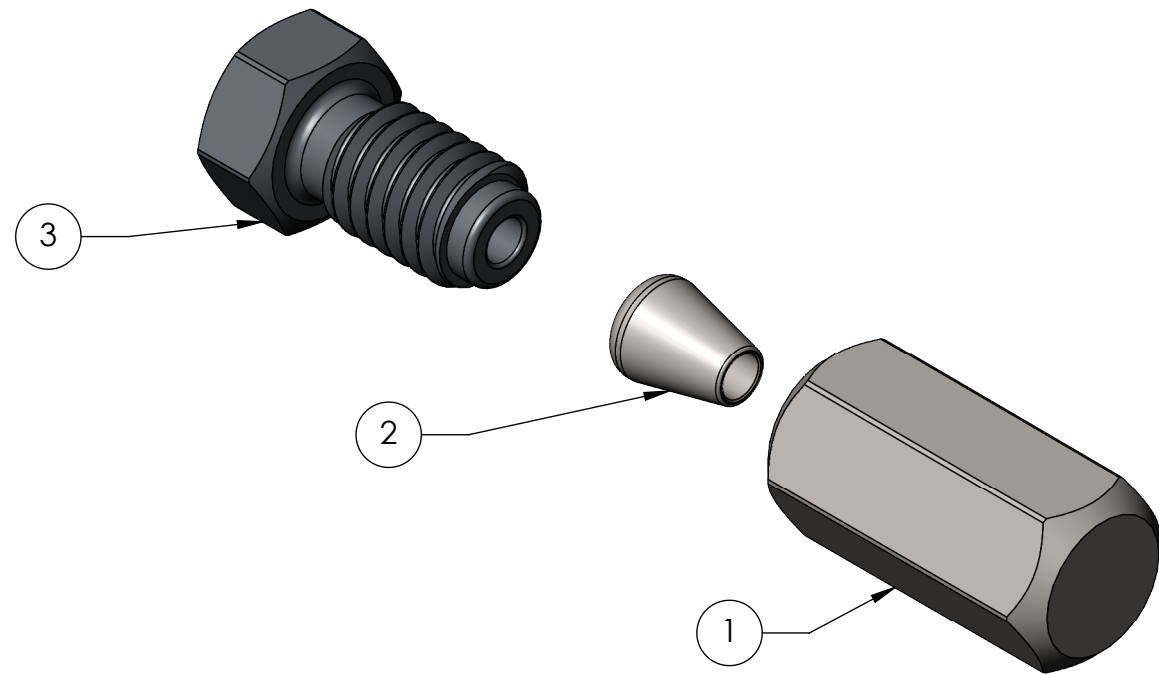
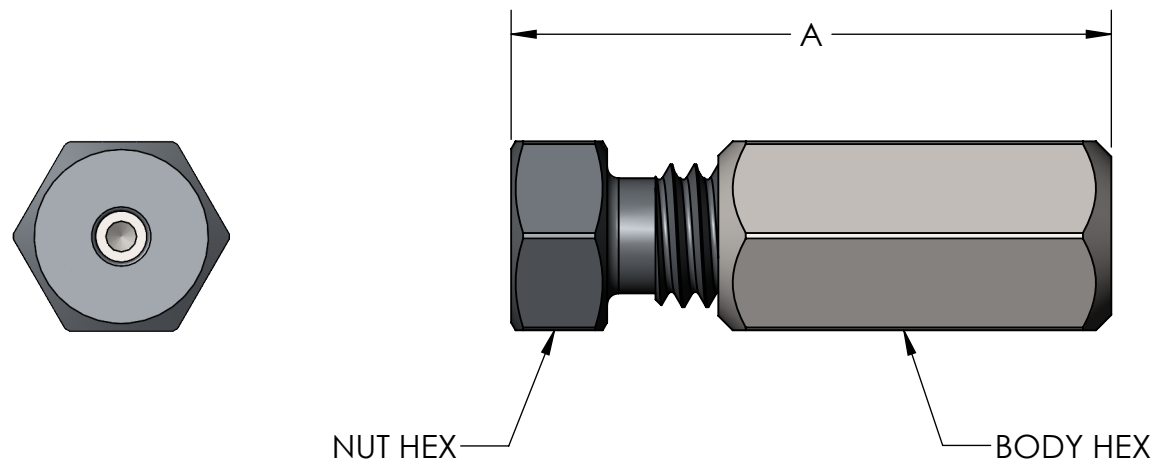



ASM Number	Description	Item #1 [See Drawing FCH-xxxx-xxx]	Item #2 [See Drawing FFH-xxxx-xxx]	Item #3 [See Drawing FNN-xxxx-xxx]	BODY HEX	NUT HEX	DIMN "A"
C-SK-16	Internal Cap with Coated Nut 1/16 Std.	FCH-S200-0B0	FFH-0202-VB0	FNN-S202-VA8	1/4	1/4	0,79
C-SS-16	Internal Cap 1/16 Std.	FCH-S200-0B0	FFH-0202-VB0	FNN-S202-VA0	1/4	1/4	0,79
C-SS-16-S	Internal Cap 1/16 Std. SilcoNert	FCH-S200-0B3	FFH-0202-VB1	FNN-S202-VA0	1/4	1/4	0,79
C-SS-16-D	Internal Cap 1/16 Std. Dursan	FCH-S200-0B4	FFH-0202-VB1	FNN-S202-VA0	1/4	1/4	0,79
C-SK-08	Internal Cap with Coated Nut 1/8 Std.	FCH-S400-0B0	FFH-0404-WB0	FNN-S404-WA8	7/16	3/8	1,05
C-SS-08	Internal Cap 1/8 Std.	FCH-S400-0B0	FFH-0404-WB0	FNN-S404-WA0	7/16	3/8	1,05
C-SS-08-S	Internal Cap 1/8 Std. SilcoNert	FCH-S400-0B3	FFH-0404-WB1	FNN-S404-WA0	7/16	3/8	1,05
C-SS-08-D	Internal Cap 1/8 Std. Dursan	FCH-S400-0B4	FFH-0404-WB1	FNN-S404-WA0	7/16	3/8	1,05

DATE	SYM	REVISION RECORD	ECO	DWN	ENG	MFG
09-25-2014	00	INITIAL RELEASE	1561	JPD	AC	PD
03-29-2016	A	CHANGED TITLE BLOCK FROM NORGREN TO AFP	0056	DB	AC	PD

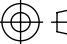


ITEM NO.	PART NUMBER	DESCRIPTION	QTY.
1	SEE CONFIGURATION TABLE	Internal Cap	1
2	SEE CONFIGURATION TABLE	Internal Ferrule	1
3	SEE CONFIGURATION TABLE	Internal Nut - Short -	1

UNLESS OTHERWISE SPECIFIED:  
 - ALL DIMENSIONS ARE IN INCHES  
 - SURFACE FINISH IS IN Ra MICRINCHES (µIN)  
 - UNSPECIFIED SURFACES MUST BE 64 Ra µIN OR BETTER  
 - REMOVE ALL BURRS & SHARP EDGES .003-.010  
 - CRITICAL FEATURES INDICATED BY   
 - TOLERANCES ARE:  
 .XX ±.010 FRACTIONAL ±1/64"  
 .XXX ±.003 ANGULAR ±.5°  
 .XXXX ±.001  
 - UNSPECIFIED CONCENTRICITY .005 TYP  
 - UNSPECIFIED INSIDE CORNER RADIUS 0.010 MAX  
 - REFER TO 3D MODEL FOR DIMENSIONS NOT SHOWN.  
 TOLERANCE .XX APPLIES  
 - DO NOT SCALE DRAWING

MATERIAL:  
 REFER TO P/N MATERIAL

FINISH:  
 MS-1022

 ACCORDANCE WITH LATEST ASME Y14.5



**Analytical Flow Products**  
 A DIVISION OF MÉCANIQUE ANALYTIQUE INC.

233, Jalbert Ouest,  
 Thetford Mines  
 Québec, Canada  
 G6G 7W1

Tel.: 418-338-0004  
 Fax.: 418-338-2500  
 Email: info@afproducts.ca  
 Web: www.afproducts.ca

DESCRIPTION: Internal Cap											
DRAWN	DATE	ENG	DATE	MFG	DATE	APPROVED	DATE				
JPD	09-25-2014	AC	09-25-2014	PD	09-25-2014						
UNIT	SIZE	DWG. NO.					REV.				
IN	B	C-xx-xx-x					A				
SCALE	4:1	SHEET		1	OF	1					

**UNCONTROLLED PRINT UNLESS STAMPED IN RED AS CONTROLLED**